

CHIPPING HAMMERS

12-15 lb class

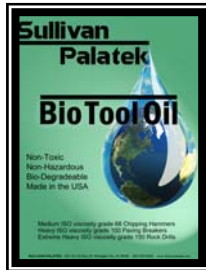
SCH-2,3,4

Dedicated to Quality....

....Committed to Support

Sullivan Palatek®

SCH 2, 3, and 4 “ stroke chipper has a durable 4 bolt D handle and inside trigger for chipping concrete in parking garages, highway pillars and light demolition and building restoration.



- Machined from premium alloy steel
- Cast D handle with inside rubberized trigger
- High shock tool steel piston
- Rotatable exhaust deflector
- Inlet 3/8” with bushing, 7/8” with out bushing
- Available with .680 Round Chuck Model SCH 2,3, or 4, R
- Available with .580 Hex Chuck SCH 2,3,or 4, H
- Standard with oval collar retainer
- Optional Universal BALL retainer available
- Optional whip hose with oiler available
- One year Warranty
- Made in USA

NOTE: WHEN ORDERING TOOLS SPECIFY CHUCK AND RETAINER STYLE

KEEP TOOLS OILED, USE ISO 68 TOOL OIL (10w30 TOOL OIL) OR SULLIVAN PALATEK P/N SI 9016 BIO OIL ISO 68, MADE IN THE USA AND A RENEWABLE OIL SOURCE FORMULATED FOR FAST MOVING TOOLS AND INTRICATE VALVES IN CHIPPERS AND BUSTERS.

Specifications SCH 4 bolt Chippers

	SCH-2		SCH-3		SCH-4	
Net Weight	13 lbs	6 kg	14 lbs	6.4 kg	15 lbs	7 kg
Length	14 in	356 mm	15.25 in	387 mm	17 in	432 mm
Bore	1.125 in	29 mm	1.125 in	29 mm	1.125 in	29 mm
Stroke	2 in	51 mm	3 in	75 mm	4 in	102 mm
Blows per minute	2300	2300	2200	2200	1800	1800
Chucks SCH 2,3,4, H	.580 in Hex	14.8 mm Hex	.580 in Hex	14.8 mm Hex	.580 in Hex	14.8 mm Hex
Chucks SCH 2,3,4, R	.680 in Rnd	17.5 mm Rnd	.680 in Rnd	17.5 mm Rnd	.680 in Rnd	17.5 mm Rnd
Air Inlet (NPT)	3/8 in (7/8”)	10 mm	3/8 in (7/8”)	10 mm	3/8 in (7/8”)	10 mm
Air Consumption*	29.75 cfm	.84 m ³ /m	31.5 cfm	.89 m ³ /m	33.23 cfm	.94 m ³ /m

*estimated

WARNING:

ALWAYS DISCONNECT THE AIR SUPPLY BEFORE CHANGING CHISELS OR DISMANTLING THE TOOL FOR SERVICE OR REPAIR. FOR MAXIMUM SAFETY WE ADVISE THE INSTALLATION OF A SHUT-OFF VALVE AT THE END OF THE AIR LINE.

FOR OPTIMUM PERFORMANCE DO NOT OPOERATE TOOL ABOVE 90 PSI (6 BAR)

DO NOT EXCEED 100 PSI (7BAR) WORKING PRESSURE.

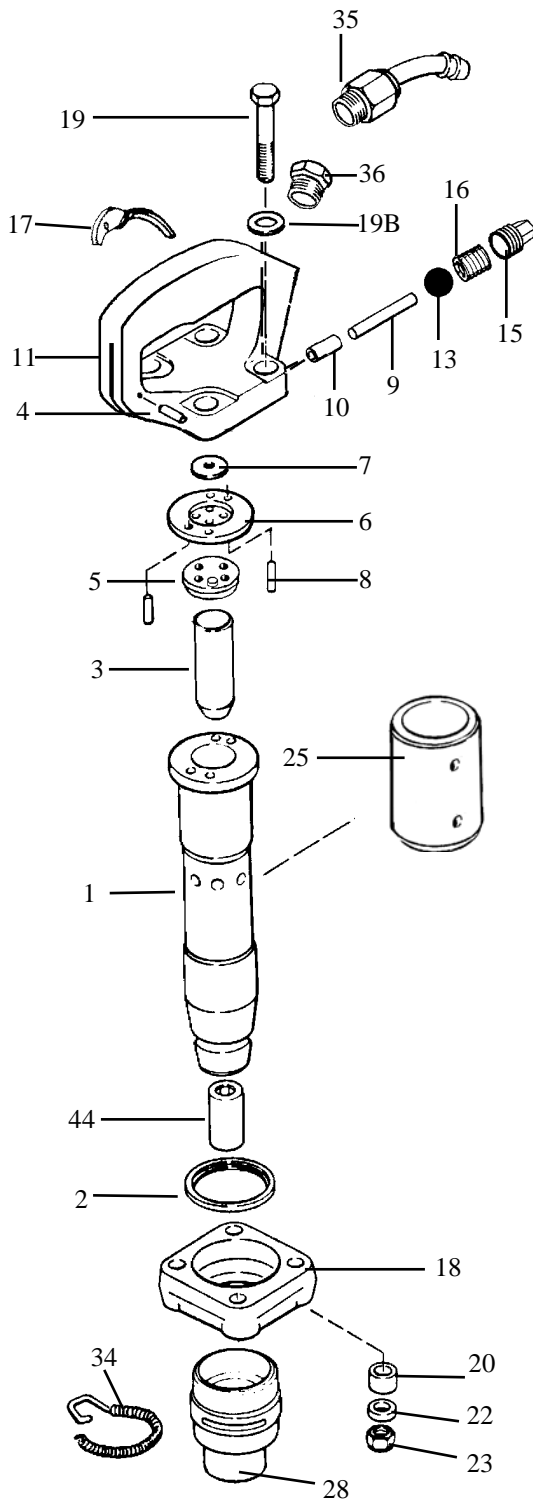
Sullivan Palatek®

1201 West US Highway 20
Michigan City, IN 46360

Ph: 800-438-6203
Fx: 800-725-6203

info@palatek.com
www.sullivanpalatek.com

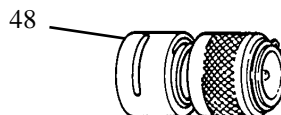
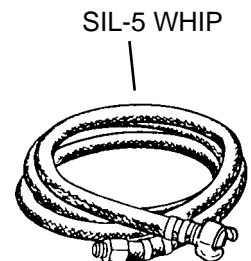
PARTS LIST CHIPPING HAMMER 12-15 lb class SCH-2,3,4



INDEX	PART	DESCRIPTION
1	SI6701-2	2" CYLINDER
1	SI6701-3	3" CYLINDER
1	SI6701-4	4" CYLINDER
2	SI6702	FLANGE RING BUMPER
3	SI6703-2	2" PISTON
3	SI6103-3	3" PISTON
3	SI6703-4	4" PISTON
4	SI6764A	FULCRUM PIN
5	SI6705	BUMPER VALVE SEAT
6	SI6706	VALVE SPACER
7	SI6707	VALVE PLATE
8	SI6704D	VALVE DOWEL (2)
9	SI6769A	PUSH PIN
10	SI6770	PUSH PIN BUSHING
11	SI6711	HANDLE BARE
NS	SI6711C	HANDLE COMPLETE
13	SI6133	THROTTLE VALVE BALL
15	SI6140N	THROTTLE VALVE PLUG*
16	SI6139	THROTTLE VALVE SPRING
17	SI6763R	TRIGGER, RUBBERIZED
18	SI6718	FLANGE
19	SI6719	HANDLE BOLT (4)
19B	SI6719B	SPRING WASHER (4)
20	SI6720	BUMPER WASHER (4)
22	SI6722	HANDLE BOLT SPACER (4)
23	SI6723	HANDLE BOLT NUT (4)
25	SI6725O	URETHANE EXHAUST DEFLECTOR
28	SI6128	OVAL COLLAR RETAINER
34	SI6134	RETAINER SPRING (SOLD BY BAG OF 10)
35	SI6135	SWIVEL(7/8 - 24) (OPTIONAL)
36	SI6136	HANDLE BUSHING 3/8"
44	SI6144R	BUSHING FOR ROUND SHANK (.680")
44	SI6144H	BUSHING FOR HEX SHANK (.580")
48	SI6148	BALL RETAINER, OPTIONAL
NS	SI9016	BIO OIL ISO 68 1 QT.
NS	SI AH-5 WHIP	6' X 1/2" WHIP HOSE W SWIVEL
NS	05019902 0004	6' X 1/2" WHIP HOSE W PF OILER

***USE LOCTITE 263 FOR INSTALLATION**

WHEN ORDERING REPLACEMENT PARTS, FURNISH THE MODEL NUMBER AND SERIAL NUMBER OF YOUR TOOLS.



**Sullivan
Palatek**